

## Bar Code Pro 5.0

### Tip Sheet #2: Quickstart Tutorial for Macintosh

Revised: 4-30-04

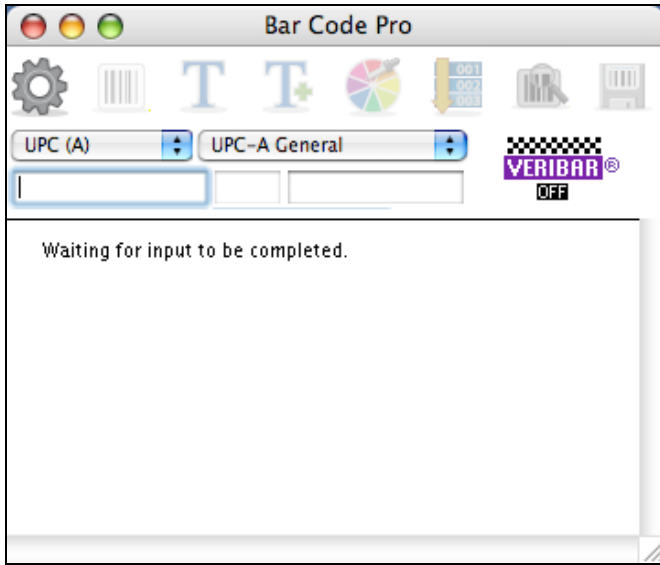
This tutorial accomplishes two things:

- 1) How to create your first barcode.
- 2) How to create and save custom settings for your bar code as a template, for example, the height of the bar code, the width, etc.

Using templates for future jobs will save you time and maximize your efficiency in working with Bar Code Pro. Once a template is created and saved, you can select a template, enter your numbers and save the bar code graphic.

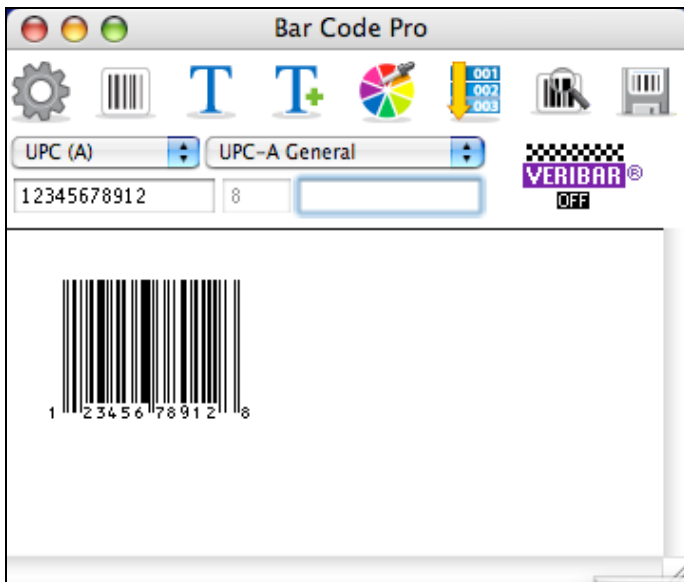
**NOTE:** Remember, saving a bar code graphic is a completely separate action from saving a Template. The time to create a template is after you've saved your customized bar code graphic.

1. Launch Bar Code Pro. The splash screen will appear followed by the main window.



Let's say you're creating a bar code for your client according to their specifications. In this example, the client wants a UPC bar code that is .50 inches high by .98 inches wide.

1. Choose UPC (A) from the Symbology pop-up menu (the pop-up bar on the left side).
2. Type the first 11 numbers of your UPC code. Do not type the 12<sup>th</sup> number. This will be created automatically for you. The bar code will appear on screen.



Once your bar code appears on-screen, click on the **Symbol** menu button. ----->



The **Symbol** menu will appear. Here, you can customize the height, width and printer dpi of your bar code. For best results, you can leave all of the other settings at their defaults (unless you've been given a specific request to change them).

Bar Width Reduction	dots	%	mils	Inches
4	12.90	1.667	0.001667	

Symbol Width	% Magnification	Bar X-dimen
1.227083	99.36	0.012917

3. In the Symbol menu, the three main settings to focus on are Printer DPI (on the upper right hand corner), Symbol Width and Vertical: Bar Height. In most cases, you will only need to adjust these three.

4. Change the **Printer dpi** to 2400 (or to whatever DPI this file will be printed at).

NOTE: If you are unsure what DPI to choose (or if you cannot find out ahead of time from the printer or service bureau), you should use 2400 DPI. For best results, always try to match the exact DPI of the printer.

5. Click on the **Symbol Width** to choose the setting closest to your desired width. In this example we'll choose the smallest possible width available at 2400 DPI, which is 0.989583.

NOTE: The minimum width you can choose is based on the Printer DPI you are using and also on whether you are creating an add-on (or supplemental) price to your code. If you choose to add the optional price bar code, this of course, will make your bar code much wider.

6. Next, change the **Vertical: Bar Height** to .5 (for 1/2 inch height).

Your settings should now look like this:

Symbol

Veribar: OFF

Method: Printer dpi Printer DPI: 2400

Horizontal:

W/N Ratio: 2.00 to 1

Bar Width Reduction	4	16.00	1.667	0.001667
	dots	%	mils	Inches

Symbol Width	% Magnification	Bar X-dimen
0.989583	80.13	0.010417

Narrow Bar: 0.008750 Quiet Zones: 0.094, 0.094

Vertical: Bar Height: .50

Miscellaneous: Line Thickness: 0.000000

Unit: Inches

Cancel OK

7. Click OK. This will return you to the main screen.

8. Now, let's say you need to create a color for the background (also known as the space between the bars or Spaces/Quiet Zone).

To change the background colors of your code, click on the **Color** button. --->



Color

Bars/Text : Black

Spaces/Quiet Zone: White

ColorCheck®

OLD	NEW
-----	-----

Type:  Spot  Process

Model:  RGB  HSL  CMYK

Cyan: 0 %

Magenta: 0 %

Yellow: 0 %

Black: 100 %

Transparent Background

Overprint

Cancel OK

The **Color** menu appears.

9. If you want a solid white background for your bar code, **UN**check the **Transparent Background** box (the default setting for background is Transparent). Then click OK. This will return you to the main screen. If you want a clear, or transparent background, you can leave this option checked.

Note: If you need to assign a Spot or Process color to your bars, please download and print BCP Tip Sheet #3 on Assigning Color tutorial.

Once you're done customizing your code, you're ready to save it.

10. Click the Save button. ----->

The Macintosh **Save** window will appear.

11. Choose a destination or folder to save your bar code to. If you have not already created a folder, click on the **NEW** button, type in a name for your new folder, choose a location for your folder, then click the **SAVE** button.

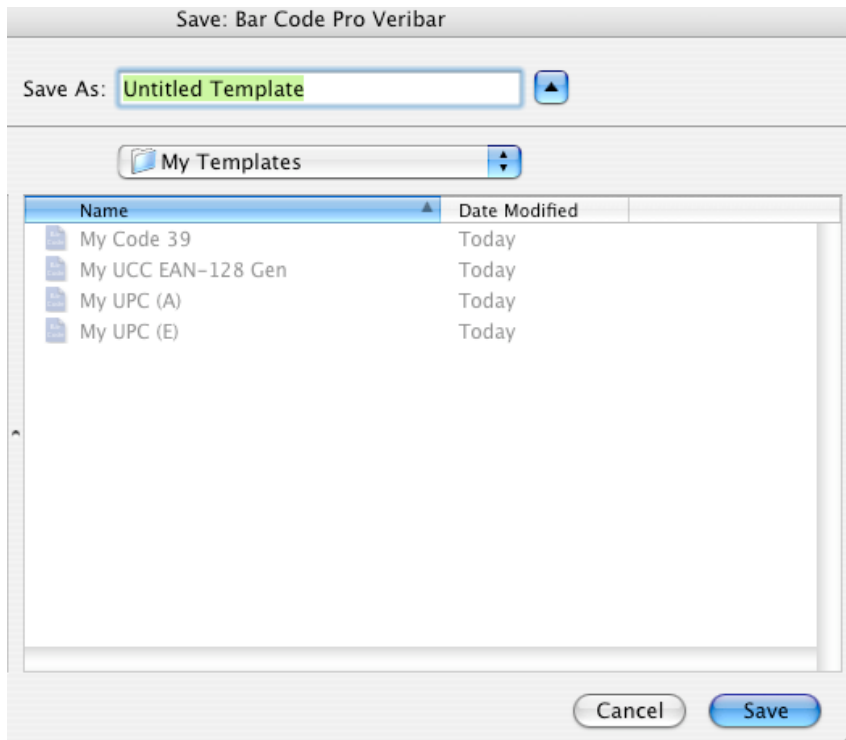
Your bar code EPS file has now been created, customized and saved and is ready for importing.

Now that you've created your EPS file, we can create a Template (template) for your bar code to save your custom settings.

**To create your Template do the following:**

1. In Bar Code Pro, go to File menu and choose "**Save Template**".

The OS X **Save** window will appear.



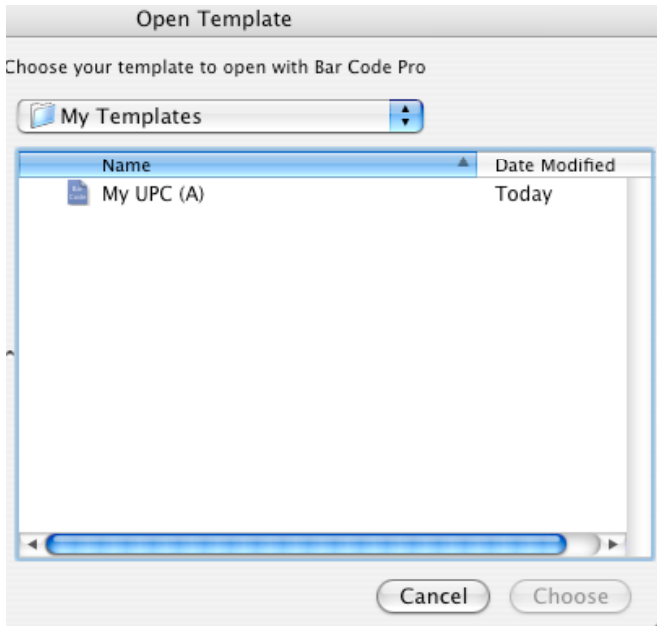
2. Before naming your Template and saving it, choose a location to save it to.

In this example we'll create a new folder called "My Templates" and save it to the Templates folder.

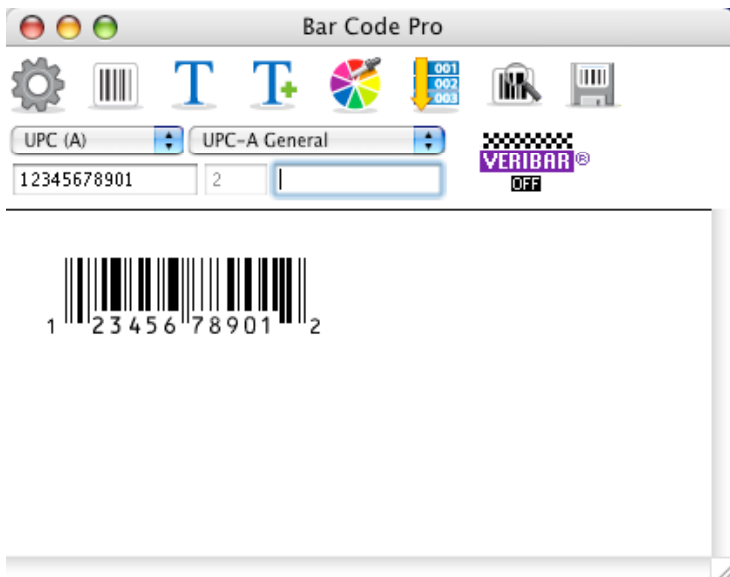
3. Once you've chosen the location, change the words **Untitled Template** in the Save As: box to whatever you'd like to name your Template. For example, you can give it the name of your client: "UPC-A JC Penney" or name it after the product your placing it on such as "UPC-A DVD Label".

5. Click SAVE.

6. The next time you need to use this custom template, go to File, Open Template to locate and choose your template.



8. Begin typing your numbers. Once you have entered the required data, your bar code will appear on screen.



**NOTE:** Although the template name has not changed (it still says UPC-A General), your template is still ACTIVE. Just type the numbers and your customized bar code will appear on onscreen.

Also DO NOT double-click on a bar code EPS files or Templates in order to open them.

For information on how to import bar code EPS files, please refer to the Bar Code Tip Sheet PDF document.

**For additional help, please contact technical support at the email address or phone number indicated below.**

**PLEASE NOTE: Technical support is not available from our toll free number. All registered users requiring technical support must call (718) 369-2944.**

## **SNX**

**Technical Support**

**Hours: Mon-Fri 10am-6pm EST**

**(718) 369-2944**

**WWW: [snx.com](http://snx.com)**

**Email: [support@snx.com](mailto:support@snx.com)**